

Installation and Operating Instructions

Lumiglas Sight Glass Wiper SW I

• **Important, please note:**

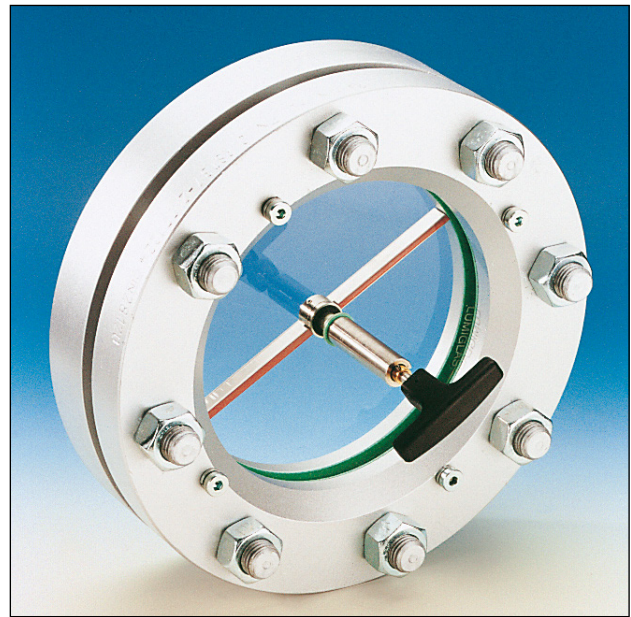
The exploded view on the right shows the individual components in their relevant positions. Parts numbered 11-16 have been works-assembled. Parts 3, 4, 5 ensure that the pressure of the wiper blades (14) against the underside of the glass is correct. Prior to installation, it should be checked that the sight glass is clean and undamaged. The wiper unit should only be installed in a sight glass disc with a centric hole that has a diameter of 10.5 mm and chamfered, undamaged edges. The wiper unit is normally intended for glass thicknesses of at least 10 mm to max. 30 mm and for operating pressures of between 2 and 6 bar, depending on the diameter of the sight glass disc and material. It is essential that the wiper blade holder (15) has a length that corresponds with the inside diameter of the fitting. If mounting is carried out correctly, the distance between the wiper blade and the edge of the flange should not be less than 1 mm. The wiper blade holder and wiper blades can be shortened prior to installation, if necessary.

• **Safety warning:**

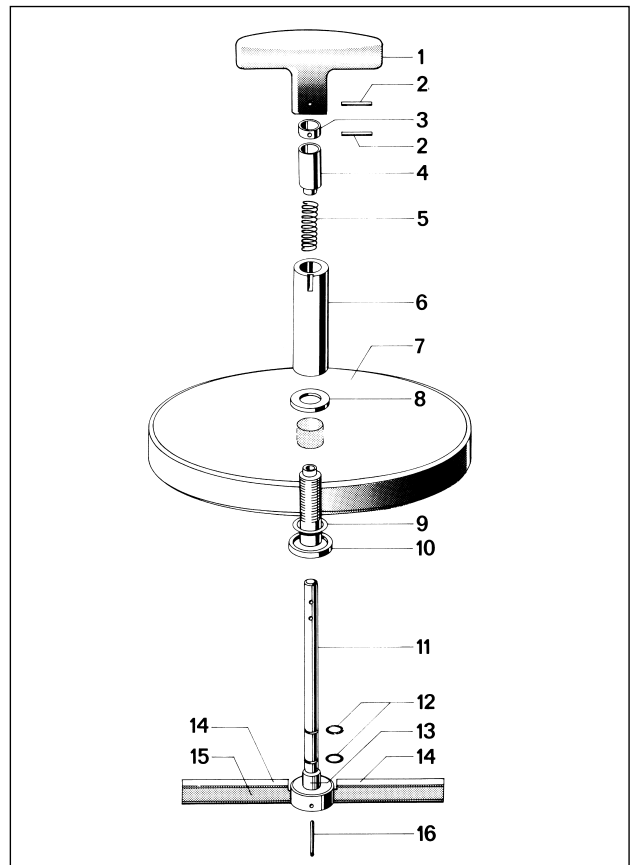
No metal parts of the wiper unit should have direct contact to any part of the surface of the sight glass disc due, for instance, to eccentricity, missing or damaged gaskets, etc. Only designated, undamaged parts should be implemented. If there is any doubt, please consult with the manufacturer.

• **Assembly process:**

1. Insert the O-ring (9) in the groove of the threaded bush with flange (10).
2. Push the flanged bush (10) into the centric hole of the sight glass disc.
3. Place the gasket (8) over the flanged bush (10) as a seal to the sight glass disc.
4. Screw the threaded sleeve (6) – keyways upward – manually onto the flanged bush (10) so that the O-ring (9) is slightly flattened against the glass (this is visible through the glass). It is also recommended to apply locking varnish into the threaded sleeve (6).
5. Pass the wiper arm spindle (11) – complete with the pre-assembled parts (12 – 16) – through the flanged bush (10) and rotate it slightly until the wiper blade holder (15) fits snugly. Take care that the gaskets (12) and the PTFE bearing bush (13) are not damaged in the process.
6. Place the spacer (4) with the journal downwards into the compression spring (5) and insert it over the wiper arm spindle (11) into the threaded sleeve (6).
7. Insert the spacer (3), longer side downwards, into the wiper arm spindle (11) until the lower of the two holes in the wiper arm spindle emerges. Fix the lower hole in this position using a locating pin (2).
8. Mount the T-handle (1) on the upper end of the wiper arm spindle; align it carefully to the upper hole in the wiper arm spindle and fix it in place using the second locating pin (2).
9. When using a lever handle:
 - Remove the T-handle (1)
 - Mount the lever handle on the upper end of the wiper arm spindle (11), taking consideration of the freewheel direction of rotation! The lettering on the free-running sleeve should point downwards.
 - Attach the cover cap and press it on firmly.

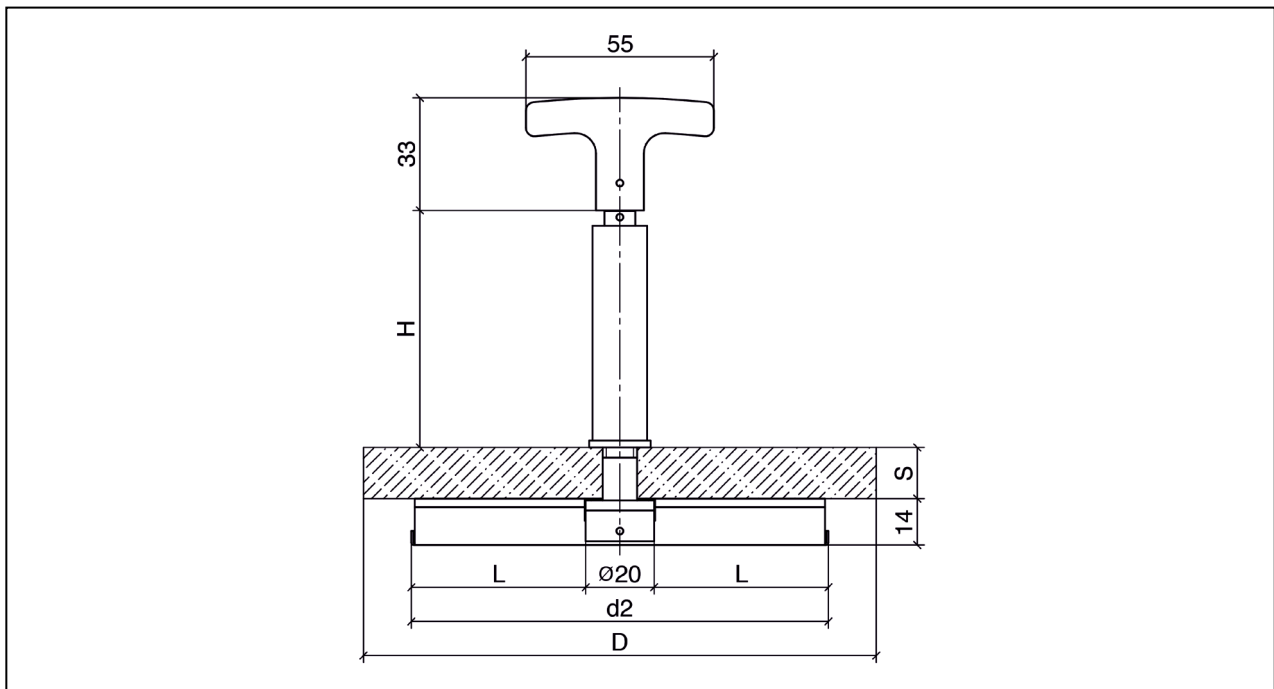


Lumiglas wiper SW 1
mounted on a sight glass fitting to DIN 28120



The flexible wiper blades (14) can be easily removed, e. g. when they are worn or damaged, by pressing the T-handle (1) gently against the glass to release the spring pressure. If gaskets (12 or 13) are damaged, they should only be reworked by the manufacturer. Please consult with your supplier.

• Dimensions for Lumiglas sight glass wiper SW 1



size		3	4	5*	6*	7*	8*	available as a special version			
nominal size of fitting	DN	50	80	100	125	150	200	9	10	11	12
for port	d_1	80	100	125	150	175	225	on request			
soda-lime or borosilicate	D	100	125	150	175	200	250				
sight glass disk	s	15/15 ¹	15/15 ¹	15/19 ¹	15/19 ¹	15/19 ¹	15/25				
	PN max...bar	6/6 ¹	6/6 ¹	5/6 ¹	4/6 ¹	4/4 ¹	2/4 ¹				
wiper	d_2	77	97	122	147	172	222	depends on diameter of glass disc and/or on inside diameter of fitting, max. 460 mm			

* Combination with Lumistar luminaires possible; Lumistar luminaire 225 and Lumistar luminaires USL and ESL only with lever handle!

¹ This data applies to borosilicate glass only

• Replacement parts

wiper blades	for sizes	L	Silicone rubber, part no.	PTFE, part no.
	3	28.5	9468.062.00	2.9468.072.34
	4	38.5	9468.063.00	2.9468.073.34
	5	51	9468.064.00	2.9468.074.34
	6	63.5	9468.065.00	2.9468.075.34
	7	76	9468.066.00	2.9468.076.34
	8	101	9468.067.00	2.9468.077.34
	9 to 12	depends on diameter of glass disc in the fitting		
seals + gaskets	for sizes	$\varnothing \times s$	part no.	
Viton-O-ring (item 12 in diagram)	1 to 6	4 x 1	0862.019.00	
Viton-O-ring (item 9 in diagram)	1 to 6	12.37 x 2.62	0862.024.00	