

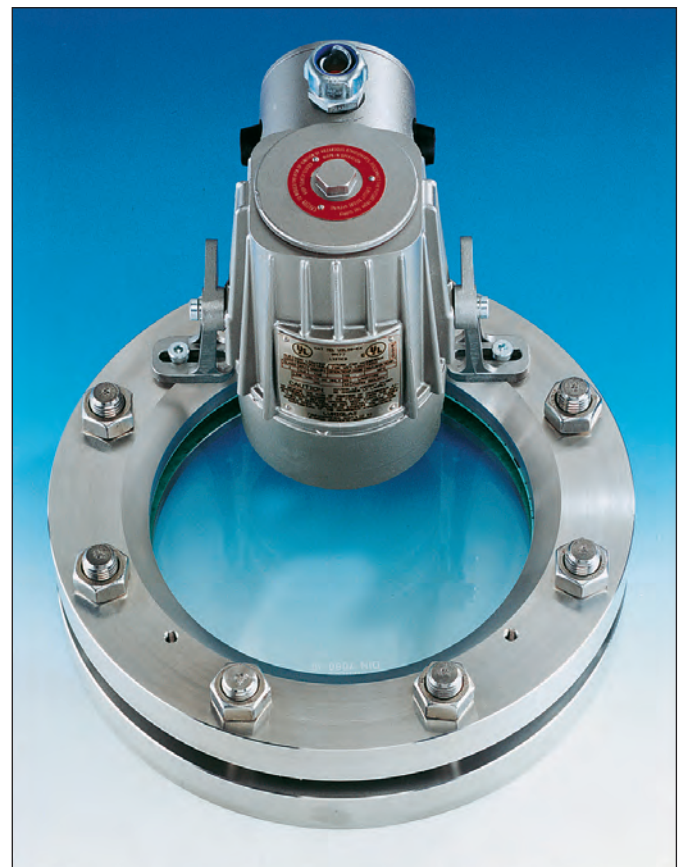


UL-listed Lumiglas luminaires USL 08-Ex + T3B, T4A

- **For mounting on sight glass fittings**
Sight glass luminaire suited both for combined sight/light port (single flanged branch version) as well as separate ports (dual flanged branch); **this Ex listed construction has an integral terminal box with three alternative connecting cable entries**
- **Compact design, high output**
- **Dazzlefree illumination – suitable for use on:**
 - circular sight glass fittings DIN 28120 / DIN 28121 or similar from size DN 50
 - screwed sight glass fittings to DIN 11851 from size DN 100
 - flow indicators from size DN 50
- **Large diameter light exit thanks to ideal screwed lens ring design**
- **Application:**
For illumination of internals of pressure vessels, tanks, hoppers, silos, stirred reactors and other normally totally enclosed vessels as well as flow indicators in **explosion hazardous areas subject to UL requirements**
- **Suitable for use in food processing**
- **Protection:**
Dust and water jet tight IP 65 to EN 60529/ DIN VDE 0470 Part 1
- **Ignition protection, Explosion group:**
 - UL 844 listed for class I Div. 1 & 2, group C & D
 - UL 1571 for "wet conditions"
- **Operating conditions:**
Independent of vessel internal pressure/vacuum
- **On no account** may the luminaire be used as a closure/means of sealing of a (pressure) vessel i. e. without a suitable sight glass fitting.
- **Lumiglas-luminaires of this model range are permitted to operate in ambient temperatures up to 40°C.**
- **Test certificate:**  +  listed Cat No. for USL 08-Ex: 9N77
- **Electrical and lamp data:**
in line with UL regulations!
Electric supply: alternating current (AC)
- **Operating voltage, power and temperature class:**
 - 120 V... Halogen-filament lamp 35 W/T4A
 - 120 V... Halogen-filament lamp 50 W/T3B
 - 120 V... Halogen-filament lamp 100 W/T3B
- **Variants:** refer to table on 4th page



Lumiglas luminaire USL 08-Ex with mounting brackets



Lumiglas luminaire USL 08-Ex
installed on a circular sight port DIN 28120

• **Lamp socket:**

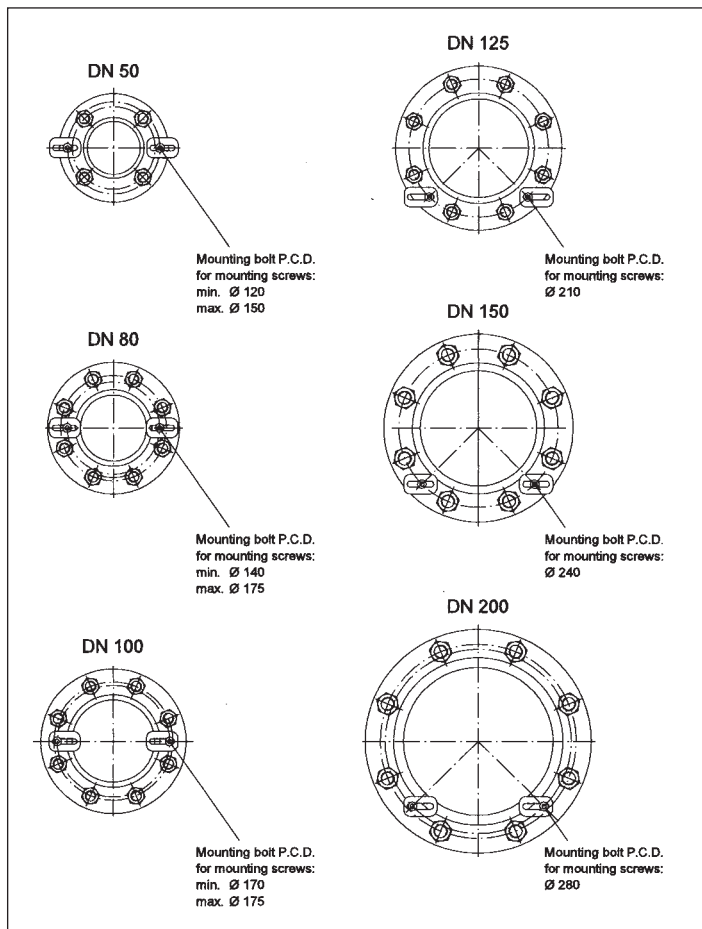
Depending on lamp used, either E26 screwed socket or BA15d bayonet socket (see table on 4th page)

• **Straightforward mounting using custom designed brackets (to be ordered separately) which ensure practical operation:**

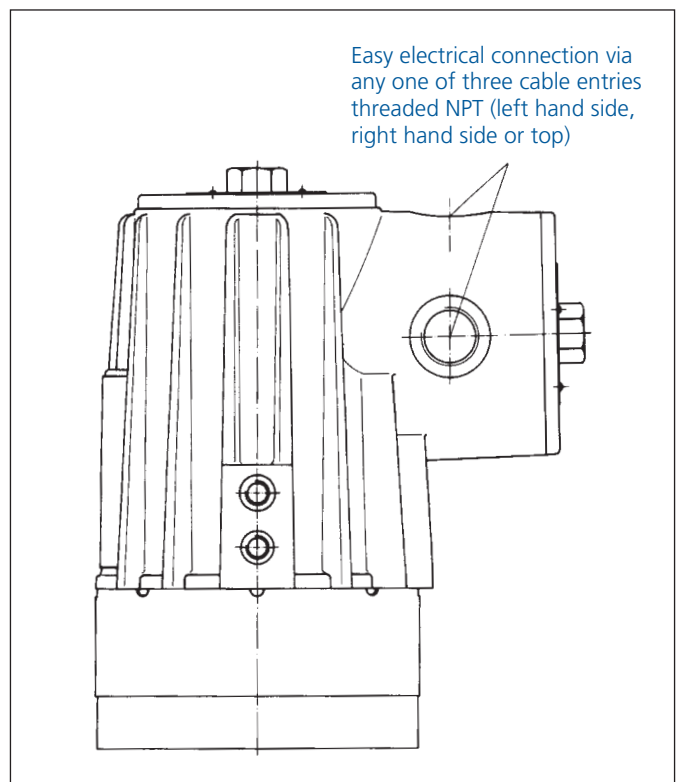
The luminaire is set up on its brackets which are fastened to the face of the cover flange of circular sight glasses or flow indicator; or onto screwed sight glass fittings.

a) straight brackets are for use with size DN 50 – DN 100 (light port only)

b) cranked brackets are for use with size DN 125 – DN 200 (sight/light port combination)



Terminal box of Lumiglas luminaire USL 08-Ex



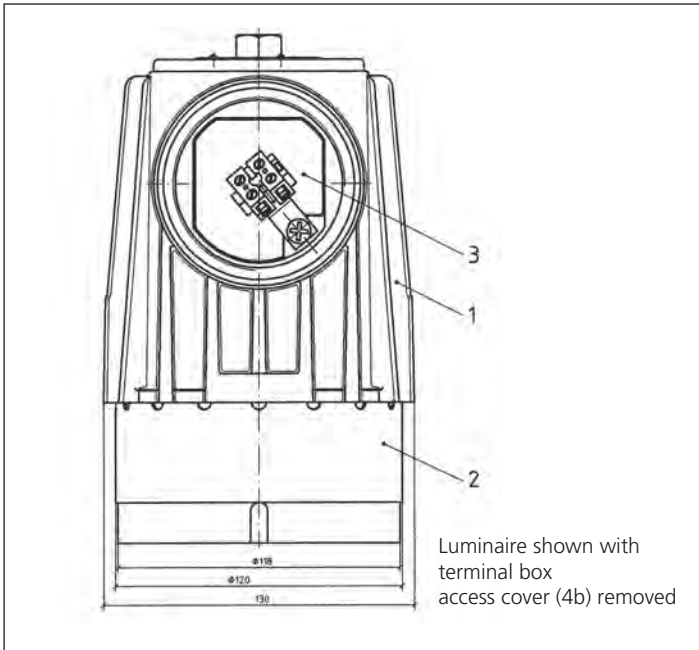
Electrical connection variations

• **Trouble free electrical connection thro' terminal box**

- The luminaire is ready wired internally! The terminal box is fitted with three NPT 1/2" threaded cable entries – (right hand side, left hand side and top).
- The two unused cable entries are sealed with blind plugs (included in delivery).
- Cable entry gland is not included in the supply as connection is usually made using cable conduit.

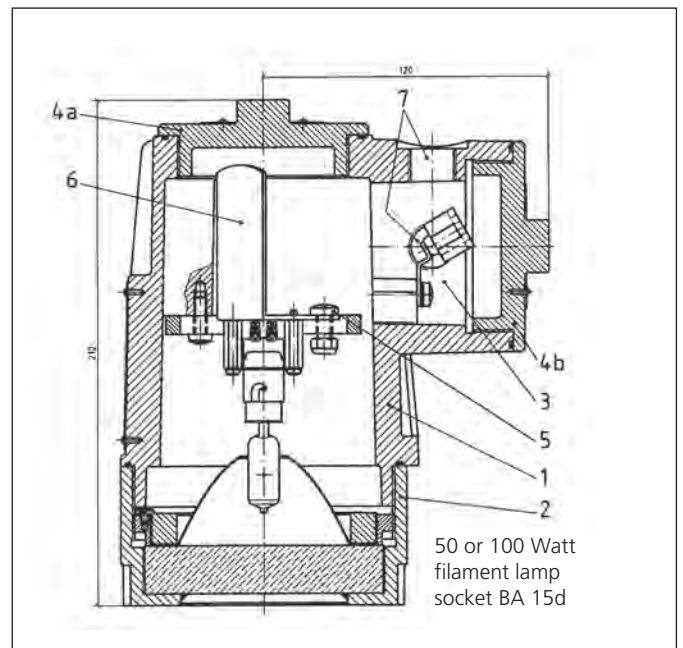
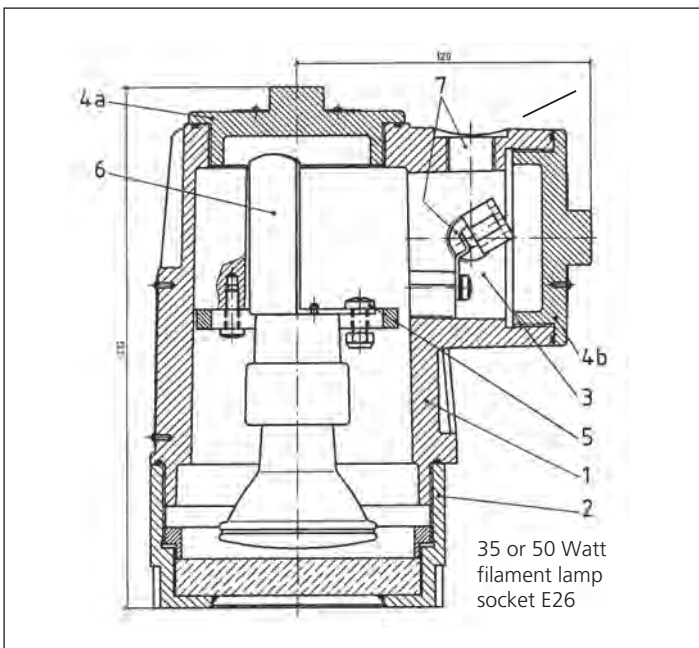
• **Lamp change made easy thanks to screwed design (4a)**

• Dimensions and electrical data for Lumiglas luminaire USL 08-Ex:



Part Description

- 1 luminaire body
- 2 screwed lens ring
- 3 terminal box with terminal block
- 4a access cover for lamp exchange
- 4b access cover for cable connection
- 5 screw with self locking nut for lamp socket
- 6 lamp socket – angle bracket assembly
- 7 3 x 1/2" in NPT threaded cable entry holes for alternative cable connection



• **Parts and materials of construction:**

- luminaire body of corrosion resistant die cast aluminium, GK-ALSi10Mg
- light aperture/lens ring aluminium ring, glass disc, O ring seal integral unit
- mounting brackets (see under optional supply) G-ALSi10Mg alloy
- weight: 3.2 kg

• Variants and connecting data:

Part	Type USL 08-Ex ¹⁾	Part no.	Supply Voltage AC	Halogen filament lamp			Temperature class at max ambient temp. 40°C	
					Socket	Voltage		Part no.
1	(120 V) Sp 35 W	3540.305.00	120 ~	reflector fil.lamp	E 26	120 V / 35 W	3232.248.00	T4A
2	(120 V) Fl 35 W	3540.305.00	120 ~	reflector fil.lamp	E 26	120 V / 35 W	3232.251.00	T4A
3	(120 V) Sp 50 W	3540.306.00	120 ~	reflector fil.lamp	E 26	120 V / 50 W	3232.249.00	T3B
4	(120 V) Fl 50 W	3540.306.00	120 ~	reflector fil.lamp	E 26	120 V / 50 W	3232.252.00	T3B
5	(120 V) Sp 50 W	3540.310.00	120 ~	separate reflector	BA 15d	120 V / 50 W	3232.275.00	T3B
6	(120 V) Sp 100 W	3540.308.00	120 ~	separate reflector	BA 15d	120 V/100 W	3232.272.00	T3B

¹⁾ Sp = Spot; Fl = Flood

• Accessories:

Component	Part No.
Luminaire mounting bracket: straight for DN 50 to DN 100	0354.005.00
Luminaire mounting bracket: cranked for DN 125 to DN 200	0354.006.00
Claw spanner for screwed lens ring	6805.002.00

• Ordering details:

- Example: - Lumiglas luminaire USL 08-Ex
120 V/Sp 100 W, BA 15d
part no. 3540.308.00
- Luminaire mounting bracket straight
part no. 0354.005.00
- Claw spanner for screwed lens ring
part no. 6805.002.00