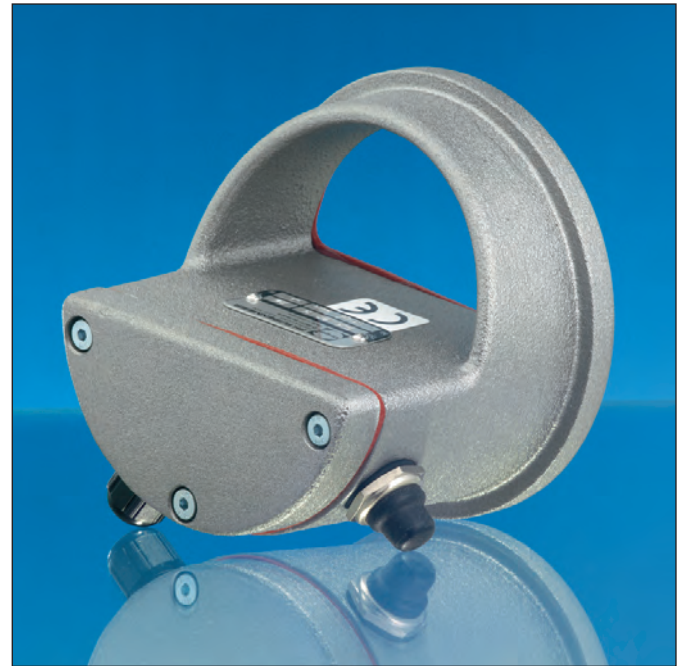


Lumiglas Luminaire SLM in high quality cast aluminium alloy version

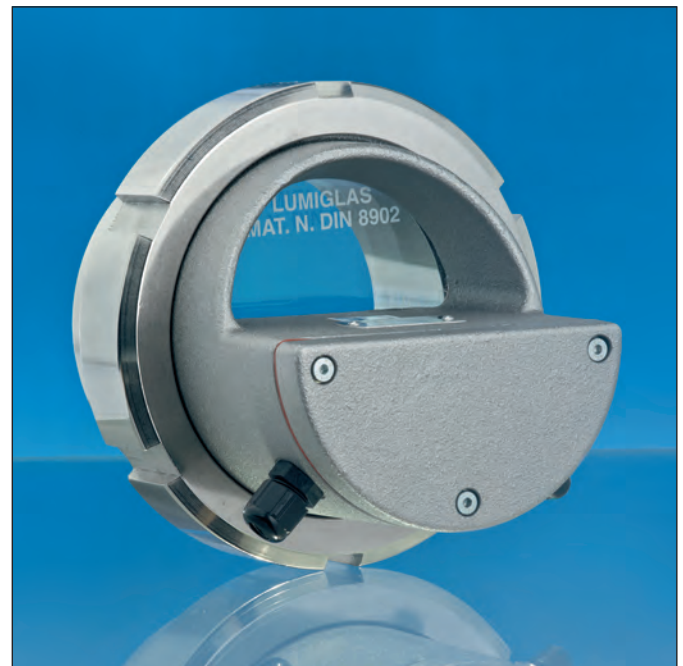
CE

Data Sheet 06.02.01

- for use coupled with screwed sight glass fittings**
 For the combination of sight and light port, suited to circular screwed sight glass fittings to DIN 11851 or similar, DN 65 to DN 125
- Application:**
 For the internal illumination of bio-reactors, laboratory mixers, filters, as well as internals of pressure vessels, storage tanks, stirred vessels, pipelines and other normally enclosed systems in **non explosion hazardous areas**. Particularly suitable for pharmaceutical and food processing industries, e. g. breweries, dairies etc.
- Protection:**
 When correctly fitted, dust and water jet proof to IP 65 and EN 60 529 / DIN VDE 0470 part 1
- Operating conditions:**
 Independent of internal vessel pressure/vacuum; max. permissible ambient temperature measured at cable entry gland, 80°C. When ambient temperature > 40°C heat resistant cable e. g. Sinotherm 110 H05GG-F 3G 1.5 mm² must be used.
- Electrical data:**
 Power supply 24 V (12 V is optionally available)
 Lamp 2 pin Halogen filament lamp
 depending on model 20 W, 50 W or 100 W
- Lamp holder:** 2 pin socket
- Transformers:** can be supplied as special accessory
- Integral switch:** the luminaires are all fitted with integral push button switch as standard
- Mechanical installation:**
 - remove slotted cover nut from sight glass unit
 - pass cover nut over luminaire body
 - check that glass disc correctly seated in fitting
 - place cover nut with luminaire over weld nozzle and tighten nut
- Caution:** only after mechanical installation can electrical connection be made.
- Important note to installation:**
 If luminaire SLM is to be fitted to an existing screwed sight port, a matching slotted cover nut should be ordered with the luminaire or the existing cover nut modified to suit.
- Electrical connection:**
 - select correct cable to suit operating conditions
 - cable diameter must suit cable entry gland
 - loosen lamp box cover screws and remove cover
 - pass cable through gland and wire to terminals
 - tighten gland
 - fit undamaged gasket to lid and tighten screws

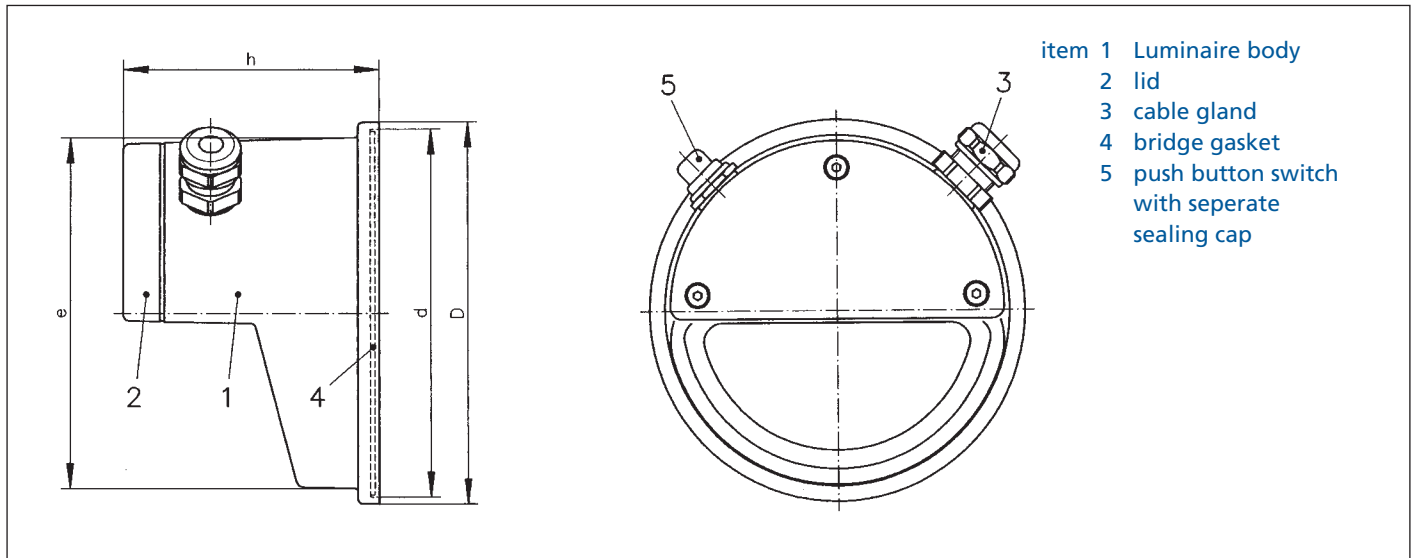


Fully equipped Lumiglas luminaire SLM



Lumiglas luminaire SLM built in a screwed sight glass fitting

• **Dimensions and electrical data for Lumiglas luminaire SLM:**



• **Parts construction and materials:**

- Luminaire of corrosion resistant die cast aluminium alloy, painted RAL 9007 (also available in stainless steel – see data sheet 06.02.02: stainless steel Lumiglas luminaire Lumistar ME).
- Suitable for use in food processing.
- Luminaire lid (2) with resilient gasket screws onto luminaire body (1) (terminal box).
- Push button switch (non maintained for short period operation) with sealing cap (5) is fitted as standard.
- Electrical connection via cable gland (3) to internal terminals 2.5 mm².

• **Ordering Information:** e. g. Lumiglas luminaire SLM 80/24 V, 20 W, Part No. 4005.438.00

Size		1	2	3	4
Lumiglas luminaire	type	SLM 65	SLM 80	SLM 100	SLM 125
compatible with screwed sight glass fittings to DIN 11851 or similar	DN	65	80	100	125
Voltage	V	24 ≈	24 ≈	24 ≈	24 ≈
Wattage	W	20	20	50	50 or 100
Dimensions	D	90	102	123	151.5
	d	84	96	118.5	146.5
	e	78	92	113	136
	h	66	76	83	89
Weight approx.	kg	0.325	0.425	0.720	0.850
Part No.		4005.321.00	4005.438.00	4005.439.00	4005.440.00

• **Combination:** Lumiglas luminaire SLM 125 can be combined with sight glass wiper SW I.

• **Lamp exchange:**

Attention: Check temperature and pressure before loosening cover nut and lifting off luminaire!

a) port assembly not under pressure

- Switch off power to luminaire.
- Loosen slotted cover nut and lift off luminaire from assembly.
- Withdraw defective lamp.
- Gripping new lamp with protective material, locate carefully in 2 pin socket and push firmly home.
- Refit and tighten luminaire and cover nut.
- Switch power on.

b) port under operating pressure

- Switch off power to luminaire.
- Unscrew lid (2) and loosen lamp holder fitted in terminal box section luminaire of body (1).
- Withdraw lamp holder complete with defective lamp.
- Change lamp as described under a).
- Refit holder with lamp in luminaire body.
- Replace lid with seal and tighten.

All dimensions in mm unless stated otherwise. Subject to change without prior notice.
WW 12.09 3755.174 a