

Spray Device for circular sightglass fittings to DIN 28120 and similar

Datasheet 02.03

• Installation:

Pressure tight screwed gland nozzles, as supplied, pass through clearance hole in cover flange and tapped hole in base flange of sightglass assembly.

• Application:

For intermittent (when needed) or continuous automatic cleaning of underside of sight port glass disc. Suitable for pressure and vacuum vessels subject to pressure test certification for all standard ratings and use in explosion hazardous as well as non hazardous areas.

• Operating conditions:

Correspond to sightglass fitting rating

• Combination with other features:

Can be combined simultaneously with Lumiglas luminaire and wiper. Care must, however, be taken that max. permissible operating temperature and resistance to temperature cycling for the relevant glass disc are considered.

• Materials:

All metallic contact parts are of stainless steel quality 1.4571.
Seals: PTFE

• Mounting:

The set, as supplied, comprises; spray jet head, locknut, two seals, connecting nozzle 10 mm OD x 1.5 mm bore with hexagon shank and fitting instructions.

When supplied as part of a complete sightglass assembly, the flanges are ready drilled and tapped to suit at the Lumiglas suppliers works.

Depending on operating requirements, the spray feed line may require a non return valve.

• Parts and materials referred to in adjoining diagram:

item	part	material
1	connecting nozzle	stainless steel, mat. no. 1.4571
2	seals	PTFE
3	locknut	stainless steel A4
4	spray head	stainless steel, mat. no. 1.4571

• Dimensions:

The spray device fits all standard sizes of sightglass assembly. Depending on application, two or more units may be fitted.

• Detailed dimensions:

On request provided details of the intended sightglass assembly are given.

• Ordering information:

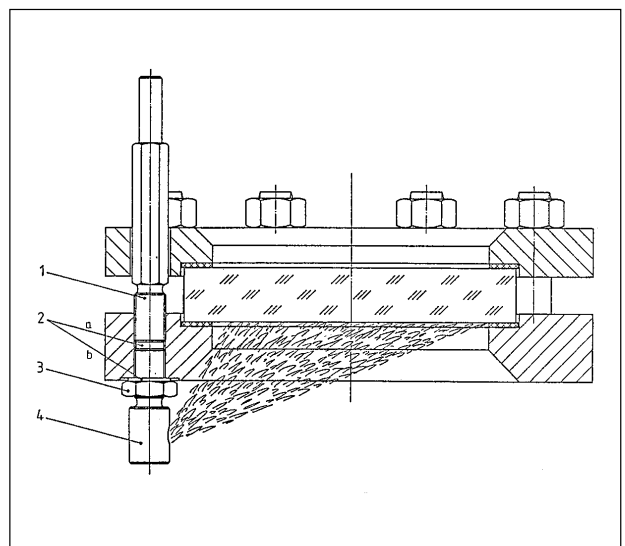
Lumiglas spray device part no. 1.1098.005.91.

If ordering in combination with complete sightglass assembly, please indicate type of fitting and intended form of installation:

1. sightglass fitting (DN/PN), materials.
2. dimensions and type of sightglass disc (Borosilicate/Sodalime glass).



Lumiglas spray device



Spray device installed in a sightglass assembly DIN 28120

All dimensions in mm unless stated otherwise. Subject to change without prior notice.
ww 2x1000/08.03 3755.173